

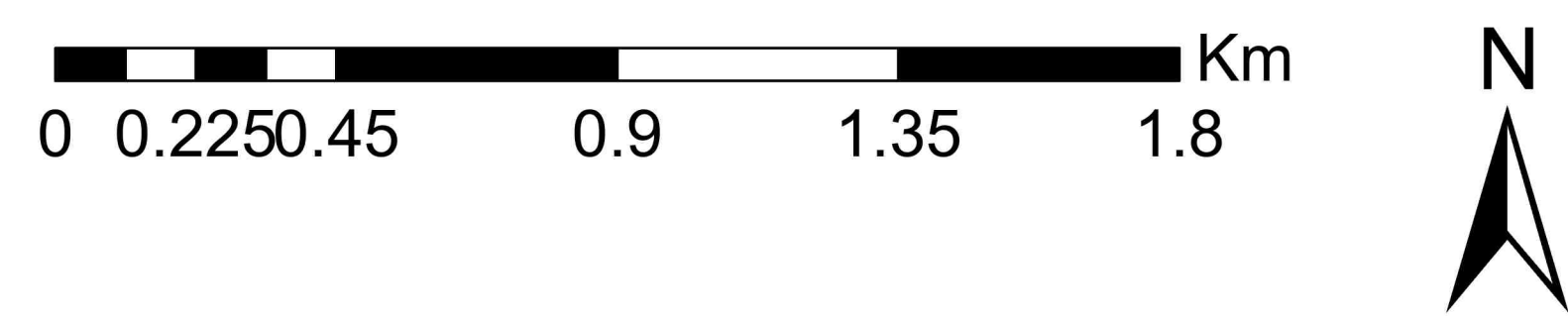
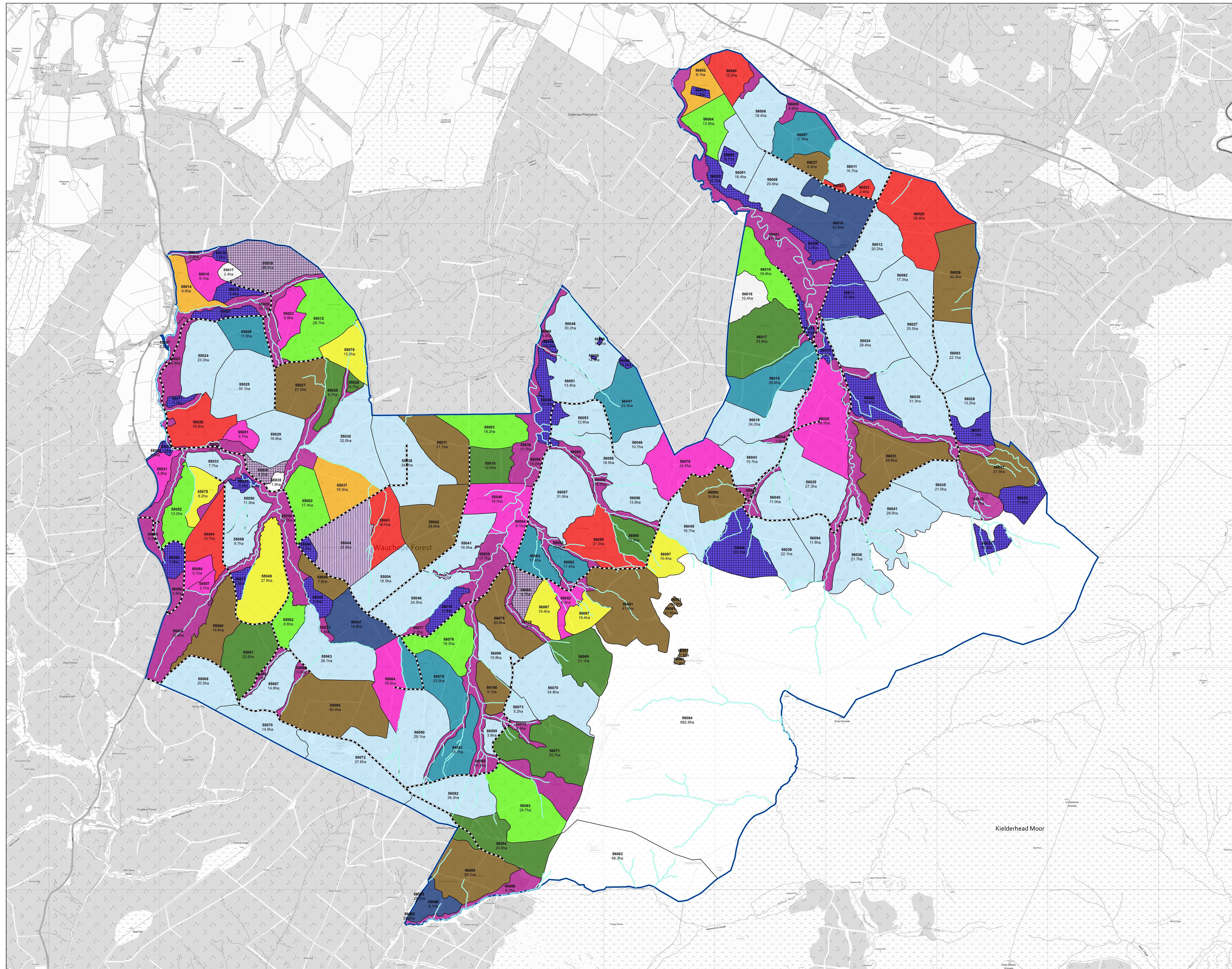
**Wauchope East LMP 2025-2035**  
**Map 4: Management**

Scale @ A0: 1:12,000

Date: 17/11/2025

**Legend**

- Forest Roads
- Watercourses
- Land Management Plan Area
- Management Coupes - Low Impact Silviculture**
- Management Type
  - Single tree selection
  - Group selection
  - Irregular shelterwood
  - Group shelterwood
  - Strip shelterwood
  - Uniform shelterwood
  - Long Term Retention
- Management Coupes - Phase 1 starts 2026**
- Recently Felled
- Phase 1 felling (2026 - 2030)
- Phase 2 felling (2031 - 2035)
- Phase 3 felling (2036 - 2040)
- Phase 4 felling (2041 - 2045)
- Phase 5 felling (2046 - 2050)
- Phase 6 felling (2051 - 2055)
- Phase 7 felling (2056 - 2060)
- After 2060
- Low Impact Silviculture
- Natural Reserve
- Minimum Intervention
- Coppice
- Long Term Retention (Fell after Phase 3)
- Open



Reproduced by permission of Ordnance Survey on behalf of HMSO. © Crown copyright and database right [2025]. All rights reserved. Ordnance Survey Licence number AC0000820350  
© Getmapping Plc and Bluesky International Limited 2025.

Declaration by FLS as an Operator.  
All timber arising from the FLS National Forests and Land represents a negligible risk under EUTR (No 995/210).

Scotland's national forests and land are responsibly managed to the UK Woodland Assurance Standard.